



**Experts in Plastics**

**Water & Gas**





## PE Water Service Pipes



Diameter/ Coil Length	25m coil	50m coil	100m coil	150m coil
20mm	■	■ ■	■ ■	■
25mm	■	■ ■	■ ■	■
32mm	■	■ ■	■ ■	■
40mm			■	
50mm	■	■ ■	■ ■	■
63mm	■	■ ■	■ ■	■

Standard coil lengths stocked ■ Blue ■ Black

■ Blue for potable water ■ Black for irrigation

### PE100 Water Service Pipes Large Bore

Available in the following:

SDR11 16 bar / 90mm—710mm  
 SDR17 10 bar / 90mm—1000mm  
 SDR21 8 bar / 160mm—1000mm  
 SDR26 6 bar / 160mm—1000mm



Available in 6m & 12m lengths in all sizes & SDR ratings

Available in 50m & 100m coils  
 90mm—180mm SDR11 & SDR 17 only



Please note that some sizes & SDR ratings are available to order only and subject to minimum order quantities please check availability

■ Blue for potable water ■ Black for irrigation/dirty water



# TUBOX-AL



**MDPE BARRIER PIPE SYSTEM FOR  
POTABLE WATER FOR USE IN  
BROWNFIELD SITES &  
CONTAMINATED GROUND**



**System includes:**

25mm Tubox-AL Barrier pipe x 50m  
 32mm Tubox-AL Barrier pipe x 50m  
 63mm Tubox-AL Barrier pipe x 6m  
 63mm Tubox-AL Barrier pipe x 50m  
 90mm Tubox-AL Barrier pipe x 50m  
 25mm Tubox-AL Coupling  
 32mm Tubox-AL Coupling  
 25mm x 3/4" Tubox-AL Male Thread  
 32mm x 1" Tubox-AL Male Thread  
 25mm x 3/4" Tubox-AL Female Thread  
 32mm x 1" Tubox-AL Female Thread  
 25mm Tubox-AL Elbow  
 32mm Tubox-AL Elbow  
 25mm Tubox-AL Tee  
 32mm Tubox-AL Tee  
 15mm Copper x 3/4" Male Thread Adaptor  
 22mm Copper x 3/4" Male Thread Adaptor  
 28mm Copper x 1" Male Thread Adaptor  
 22mm Copper x 3/4" Female Thread Adaptor  
 28mm Copper x 1" Female Thread Adaptor  
 3/4" Female Threaded Brass Stoptap BS1010  
 1" Female Threaded Brass Stoptap BS1010  
 Aluminium foil tape 50mm wide x 45m long  
 50mm wide x 10m long Petrolatum Tape  
 Deburring Tool  
 Pipe Cutters (25-32mm)

Nom Size SDR11	Core Pipe wall thickness	Aluminium wall thickness	PE Cover wall thickness
mm	mm	mm	mm
25	2.3	.11	1.0
32	3.0	.11	1.0
63	5.8	.11	1.3
90	8.2	.11	1.3
110	10.0	.11	1.8
125	11.4	.11	1.8
180	16.4	.11	2.5
250	22.7	.11	2.5

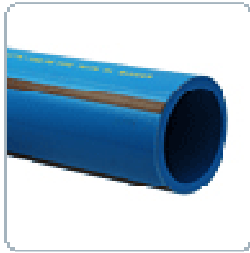
**Available in sizes up to 250mm diameter**



**Tel: 0871 2000997**

**F: 0871 2000998**

**e-mail: [sales@egsutilities.co.uk](mailto:sales@egsutilities.co.uk)**



## PROTECTA-LINE

- Protecta-Line® encompasses a fully integrated system of pipe and fittings: Protecta-Line® Mechanical Compression Fittings, Protecta-Line® Stop Cocks, Protecta-Line® Self Tapping Ferrule Off-Takes and Protecta-Line® Fluid Compression Fittings
- The double bonded construction incorporates an impermeable metal barrier wrapped onto a standard central core pipe of Excel® (PE100) or PE80 conforming to BS EN 12201, BS 6572 or WIS 4-32-17
- No contact between the pipe's protective aluminium layer and drinking water
- Protecta-Line® pipe is from 25mm to 63mm in SDR11 PE80 and from 90mm to 180mm in SDR 11 and SDR17 PE100. Available in 6m and 12m sticks, 50m and 100m coils, depending on diameter
- 6m straight lengths are available at sizes 63mm to 180mm and 12m straight lengths are available at size 125mm and above
- All sizes are available in 50m coils; 100m coils are available at size 63mm and above. 63mm Protecta-Line® pipe is also available in 25m coils
- Protecta-Line® Mechanical Compression Fittings from 25mm to 63mm including Couplers, Reducers, Transition Fittings, Equal Tees and 90° Elbows
- Protecta-Line® Stop Cocks at 25mm and 32mm
- Protecta-Line® Self Tapping Ferrule Off-Takes in main sizes 63mm to 180mm, with 25mm and 32mm outlets
- Protecta-Line® Fluid Compression Fittings from 63mm to 180mm including Couplers, Reducers, 90° Elbows, 45° Elbows, Equal Tees, Flanged Branch Tees and Stub Flanges
- Protecta-Line®'s multi-layer composite pipe prevents potential tainting caused by through-wall permeation in contaminated land
- Protecta-Line® is lightweight, flexible and easy to install just like conventional PE pipe
- Protecta-Line® is the most complete system of pipe and fittings available which are compliant with WIS 4-32-19



Tel: 0871 2000997  
Tel: 0871 2000997

Fax: 0871 2000998  
F: 0871 2000998

e-mail: [sales@egsutilities.co.uk](mailto:sales@egsutilities.co.uk)  
e-mail: [sales@egsutilities.co.uk](mailto:sales@egsutilities.co.uk)



## Compression Fittings for Water 16mm—110mm



A comprehensive range of fittings including;

- Couplings
  - Tees
  - Elbows
  - Reducers
- Male Adaptors
- Female Adaptors
  - Male Tees
  - Female Tees
  - Male Elbows
  - Female Elbows
- Wall Plate Elbows
- Reducing Elbows
  - Valves
- Universal Transition Fittings
  - Fitting Tools
  - Nipples
  - Bushes
  - Hosetails

Detailed price list available





## PE Fusion Fittings



Electrofusion Fittings 20mm—315mm  
Butt Fusion Fittings 20mm—630mm

A full range of Fittings for PE systems are available in Electrufusion,  
Long Spigot & Papped types, including;

- Couplings
- Elbows
- Tees
- Reducers
- Tapping Tees
- Duckfoot Bends
  - Saddles
  - Flanges
- Long Radius Bends
- Special Fabrications

Contact the sales office with your specific requirements



Full range of Automatic and Manual Electrofusion  
machines, including GPS & Bluetooth options are  
available to buy or hire





## Valves & Strainers

A wide variety of valves & strainers are available, please call the sales office with your specific requirements



---

## Utility Chambers

A range of Modular Chambers, Valve Boxes & Access Covers

Contact the sales office for details



Tel: 0871 2000997

F: 0871 2000998

e-mail: [sales@egsutilities.co.uk](mailto:sales@egsutilities.co.uk)



## PVCu Pressure System



A comprehensive range of pipe & fittings including;



- Solvent Fittings
- Threaded Fittings
  - Foot Valves
  - Check Valves
  - Ball Valves
- Butterfly Valves
- Flange Adaptors



Imperial sizes 1/2" - 4"  
Metric Sizes 20mm—225mm



Detailed price list available



Also available to order in ABS

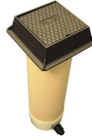




## Stop Tap Chambers, Meter Chambers & Ancillaries



Stop Tap Chamber



Meter Chamber



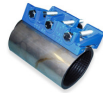
Water Meter Manifold



Meter Manifold Assembly



Stand Pipes



Repair Clamps



Squeeze off tools



Water Meters

## Pumps & Controls

EGS provide a huge range of pumps for all your needs:

Borehole Submersible Pumps

Well Pumps

Submersible Drainer Pumps

Centrifugal Pumps

We can also provide bespoke:

Dataloggers

Telemetry

Control Panels & Starters



Full range of Automatic and Manual Electrofusion machines, including GPS & Bluetooth options are available to buy or hire

## Ducting

### EN50086-2-4 Twinwall Ducting

63mm & 110mm Blue Twinwall Ducting 50m Coils



### EN50086-2-4 Twinwall Ducting

110mm, 150mm, 225mm & 300mm Blue Twinwall Ducting 6m lengths



Tel: 0871 2000997

F: 0871 2000998

e-mail: [sales@egsutilities.co.uk](mailto:sales@egsutilities.co.uk)



## Gas



### Gas PE Pipe in Coils

#### Ex-Stock:

25mm x 50m coil PE80 SDR11  
32mm x 50m coil PE80 SDR11  
63mm x 50m coil PE80 SDR11  
90mm x 50m coil PE80 SDR17.6

#### To order:

125mm x 50m coil PE80 SDR17.6  
180mm x 50m coil PE80 SDR17.6  
SDR11 Also available to order 90mm +



### Gas PE Pipe in straight lengths

#### Ex-Stock:

90mm x 6m PE80 SDR17.6  
125mm x 6m PE80 SDR17.6  
180mm x 6m PE80 SDR17.6

#### To Order:

250mm—630mm 6m lengths PE80 SDR17.6  
90mm—630mm 12m lengths PE80 SDR17.6

SDR11 also available to order



### Pro-Fuse Gas Main



**TracPipe**  
Flexible Gas Piping by Omega Flex

### TracPipe Flexible Gas Pipe 12mm—50mm Nom Dia



### TracPipe Ducting

## Ducting



### Transco Spec Ducting

60mm & 100mm Yellow  
Perforated Ducting 50m Coils



### EN50086-2-4 Twinwall Ducting

94/110mm, 150/177mm, 225/260mm & 300/360mm Yellow  
Twinwall Ducting 6m lengths  
50/63mm & 94/110mm 50m coils





## Comprehensive Range of Fusion Fittings for Gas 20mm-315mm



## Gas Service Compression Fittings 25mm-63mm



## Gas Meter Boxes



## Warning Tapes



## Gas Meters



Tel: 0871 2000997

F: 0871 2000998

e-mail: [sales@egsutilities.co.uk](mailto:sales@egsutilities.co.uk)



Electricity Ducting  
Telecommunications Ducting  
CATV Ducting  
Water Ducting  
Gas Ducting  
Streetlighting Ducting  
Traffic Signals Ducting  
Motorway Communications Ducting  
Directional Drilling Ducting  
Sub-Ducts  
  
Polyethylene Water System  
Barrier Pipe System  
Polyethylene Gas System  
PVCu Pressure System  
ABS Pressure System  
Water & Gas Meters  
Meter Boxes  
Valves  
Compression Fittings  
Access & Utility Chambers  
Pumps  
Fusion Equipment  
  
Erosion Control  
Stormwater Management  
Geotextiles  
Geothermal Systems  
Rainwater Harvesting  
Agricultural Mouldings

Soil, Waste & Rainwater (To order only)

EN1401 Drainage System  
Twinwall Surface Water System  
Twinwall Sewer System  
Land Drainage  
Yard & Road Gullies  
Fin Drains  
Linear Drainage  
Steel Reinforced Twinwall System  
Structured Wall Pipes  
Flexible Couplings  
No Dig Repair Kits  
Drain Testing Equipment  
Backflow Valves  
Flap Valves  
Special Fabrications  
Manhole Covers & Frames  
  
Septic Tanks  
Sewage Treatment Plants  
Cesspools  
Pump Stations  
Oil Storage Tanks  
Water Storage Tanks  
Fuel Stations  
  
Landfill Gas Plastics  
  
Installation Equipment  
  
Ductile Iron Pipe (To order only)  
Clay Drainage (To order only)  
Concrete Products (To order only)